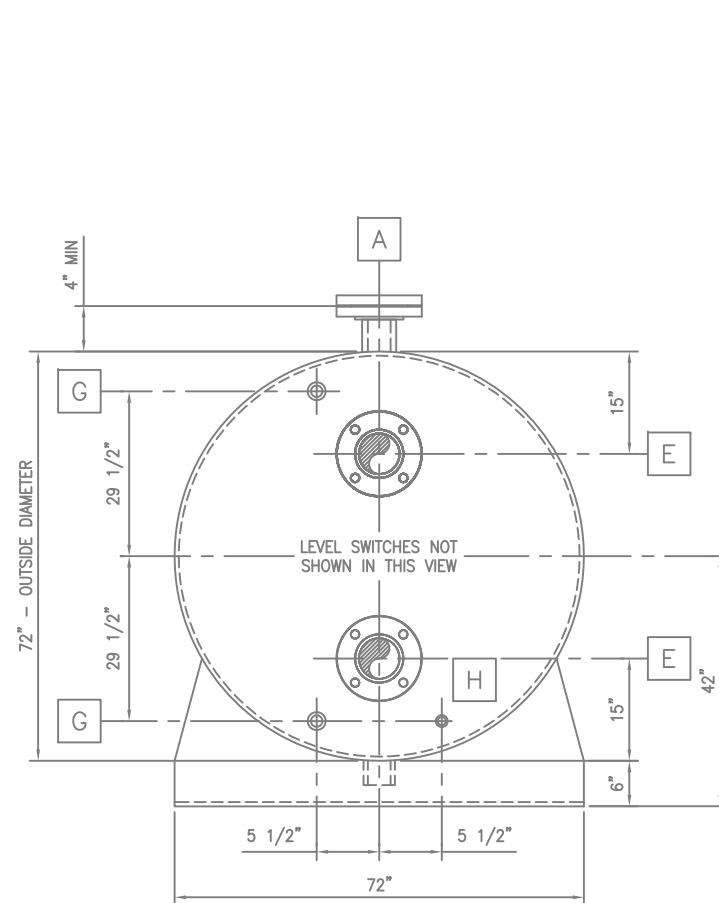
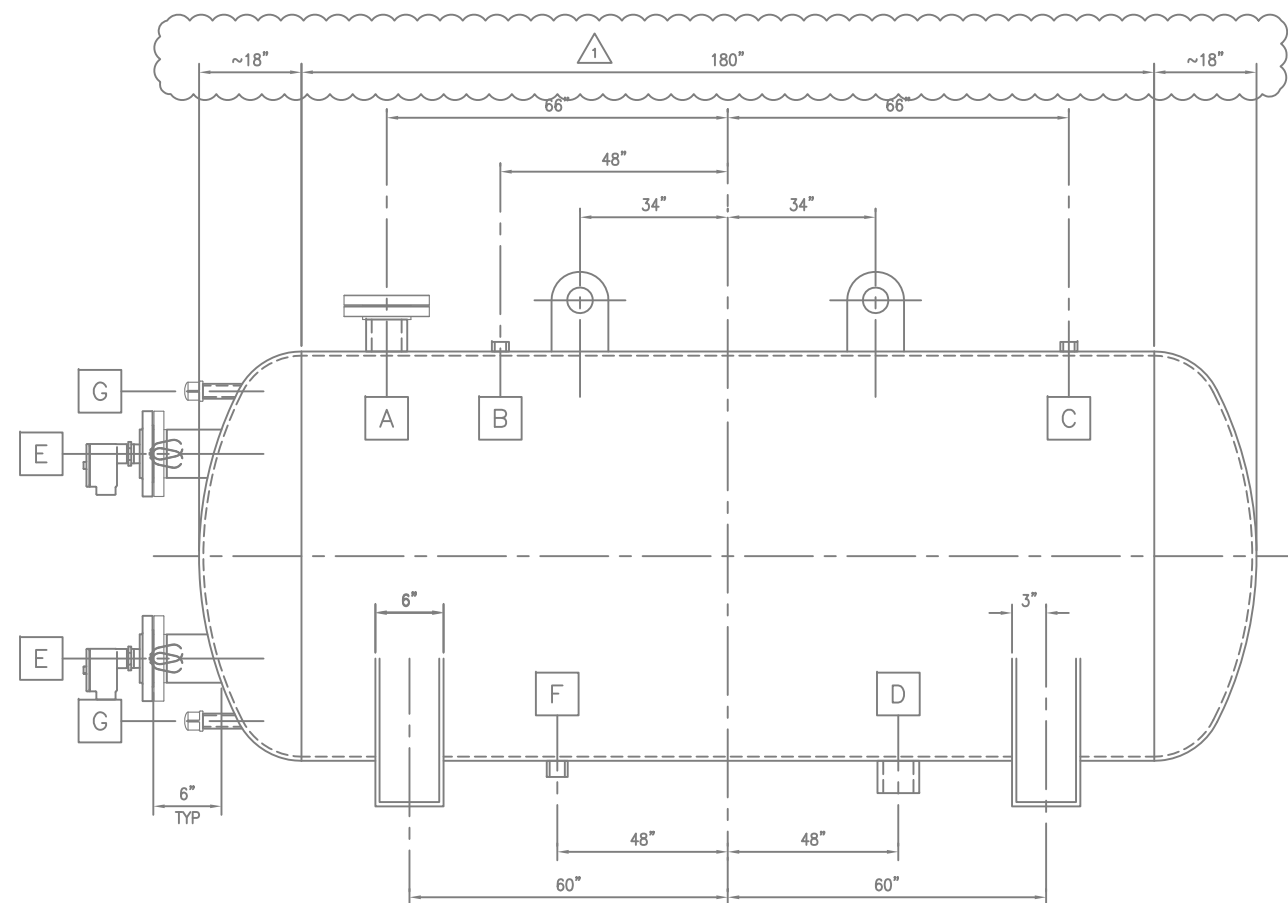


NOZZLE	SIZE	TYPE	DESCRIPTION
A	3" SCH 40	RFSO FLG	INSPECTION PORT W/ BLIND FLG
B	1 1/2" 3000#	COUPLING SW	NITROGEN INLET
C	1 1/2" 3000#	COUPLING SW	NITROGEN OUTLET
D	4" SCH 40	BUTT WELD	EXPANSION LINE
E	3" SCH 40	RFSO FLANGE	LEVEL SWITCH
F	2" 3000#	COUPLING SW	HEAT-UP / DRAIN
G	1" SCH 40	NPT	SPARE
H	1" SCH 40	NPT	THERMOWELL

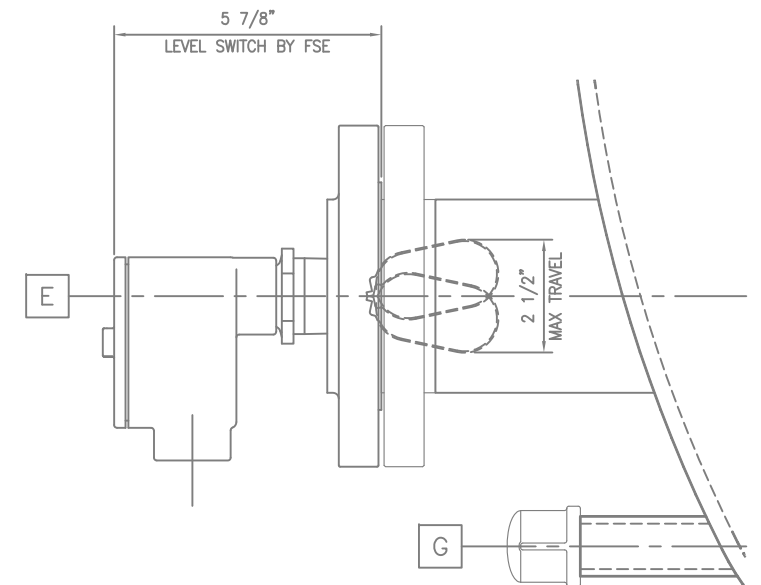


END VIEW

SCALE: NONE

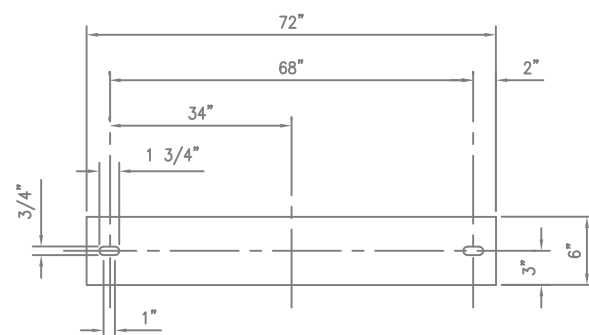


ELEVATION VIEW
SCALE: NONE

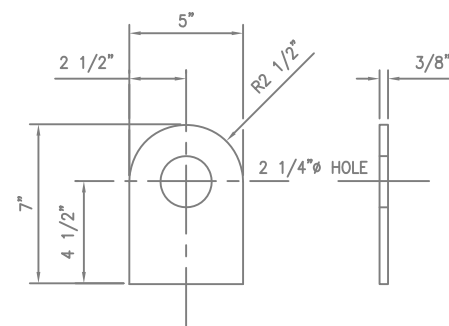


LEVEL SWITCH DETAIL

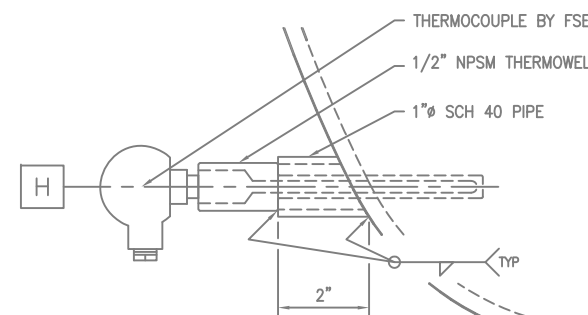
SCALE: 6" = 1'-0"



BASE PLATE DETAIL
SCALE: 3" = 1'-0"



LIFTING LUG DETAIL
SCALE: 3" = 1'-0"



THERMOWELL DETAIL
SCALE: 6" = 1'-0"

PAINT : HIGH TEMP SILVER


WEIGHT OF EXPANSION TANK : 7770 LBS – DRY APPROX.

WEIGHT OF EXPANSION TANK : 32270 LBS – WET APPROX

- NOTES :
1. DESIGN CODE : ASME SEC. VIII DIV. 1 NATIONAL BOARD REGISTERED STAMPED,
DESIGN PRESSURE : 100 PSIG
DESIGN TEMPERATURE : 700°F
 2. ALL OPENINGS TO BE PLUGGED WITH PLASTIC PLUGS OR CAPS FOR SHIPPING
 3. TANK SERVICE IS NON-CORROSIVE, NOT FOR COMPRESSED AIR
 4. TOLERANCE OF DIMENSIONS : $\pm 1/8"$ UNLESS OTHERWISE NOTED
 5. ASME SEC. VIII DIV. 1 CALCULATIONS SHOULD INCLUDE LIQUID STATIC HEAD

REVISIONS	#	DATE	ISSUE DESCRIPTION	CHKD	BY	REFERENCE DRAWINGS	DRAWING TITLE	DRAWING NO.
	1	11/10/14	REVISED TYPO IN TANK LENGTH	AF	R/LP			
	0	09/18/14	ISSUED FOR CONSTRUCTION	AF	R/JK			

This drawing is the property of FSE ENERGY and it is not to be reproduced, copied or loaned without permission from FSE ENERGY nor used for any other purposes than which is specifically furnished.

		74378 HIGHWAY 25 COVINGTON, LOUISIANA 70435 985-867-1150 www.fseenergy.com	
JOB NO. 01: 40115	DATE DRAWN: 09/15/14	APPROVED BY: AF	
SCALE: AS NOTED	DRAWN BY: RJK	CHECKED BY: AF	
GENERAL ARRANGEMENT 3500 GALLON EXPANSION TANK			
CLIENT / LOCATION PATRIOT FUELS BRODSEEL ANNAMAW, IL	JOB CDS: 40115-ET02	REV. 1	DRAWING NO. ET02